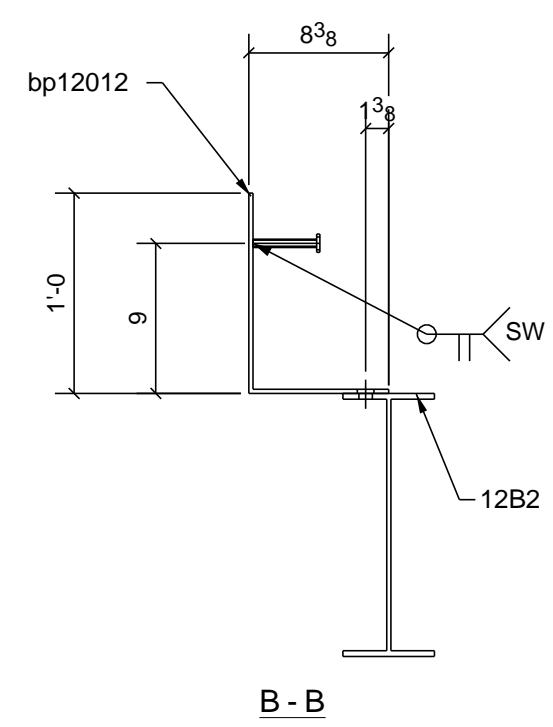
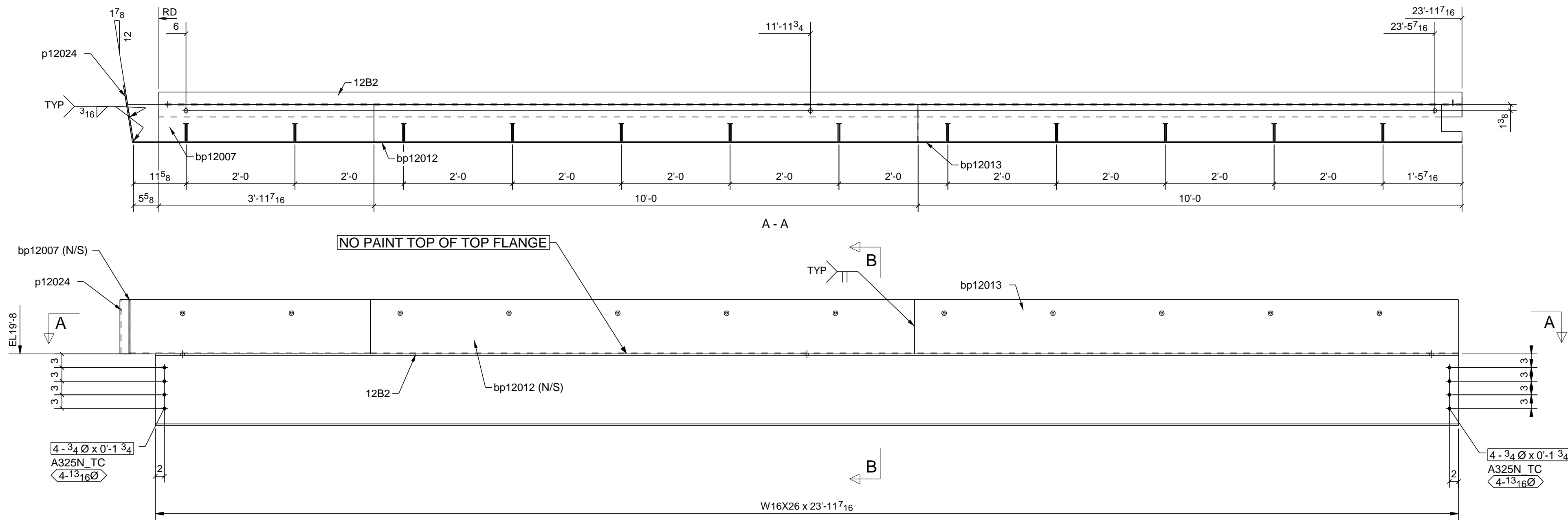


SHIP MARK	DIV	ASS'M MARK	NO. PCS	SECTION	LENGTH		CHEMISTRY	WEIGHT	P.O. NUMBER	REMARKS	PG / ITEM
					FT.	IN.					
12B2	12		1	W16X26	23'-11 7/16		A992	626.1			5/38
		bp12007	1	PL1/4"X54 3/8"	1'-7 7/8		A36	76.1			bp15
			1	3/4Ø A325N_TC BOLT	0'-1 3/4		A325N_TC				
			12	STUD 1/2Ø	0'-4		A108				
		bp12012	1	PL1/4"X120"	1'-7 7/8		A36	171.2			bp16
			1	3/4Ø A325N_TC BOLT	0'-1 3/4		A325N_TC				
		bp12013	1	PL1/4"X120"	1'-7 7/8		A36	169.3			bp16
			1	3/4Ø A325N_TC BOLT	0'-1 3/4		A325N_TC				
		p12024	1	PL1/4"X12"	1'-0 11/16		A36	10.8			
TOTAL WEIGHT FOR 1 ASSEMBLY								1053.5			

NOTE: ALL WORKSHOP BOLTS SHALL BE TIGHTENED BY THE "SNUG-TIGHT" CONDITION AS DEFINED BY AISC, U.O.N.



ONE - BEAM - 12B2

Conn. Code

W 15 3/4 x 1/4
F 5 1/2 x 3/8

Conn. Code

WELDING ELECTRODE E70XX/LH UNLESS NOTED		STEEL SPEC. W-SHAPES ASTM A992 HOLLOW STRUCTURAL SHAPES ASTM A500-B/C ALL OTHER MATERIAL ASTM A36 UNLESS NOTED		HOLE SIZE 13/16Ø	
<p>ERECTOR'S NOTE STEEL IS FABRICATED WITH "ERECTION MARKS" ON LEFT HAND END OF MEMBERS</p> <p>ALL HOLES IN BEAM END CONNECTION CLIP ANGLE OUTSTANDING LEG SHALL BE 13/16x1 HORIZ SLOTS U.N.O</p>					
PREP	SSPC-SP2				
SHOP PAINT	1-S/C STD SHOP PRIMER				
REF DWG.:	E2.1B/4 & E2.14B/5				
REVISIONS		NO.	DATE	BY	DESCRIPTION OF REVISION
0		08/09/17	MR		FOR FAB
A		07/28/17	MR		FOR APPL
<p>RICHMOND, VA (804)355-7481 RONA, VA. (404)248-1009</p>					
PROJECT	UVA DAVENPORT FIELD EXPANSION				
LOCATION	CHARLOTTESVILLE, VA 22904				
ARCHT.	DLR GROUP				
CONTR.	MARTIN HORN INC				
		MADE	AH	06/22/2017	CHKD. MJK 08/09/17
ITEMS		ORDER NO. 27-508			SHEET NO. 12B2
		SEQ 12			