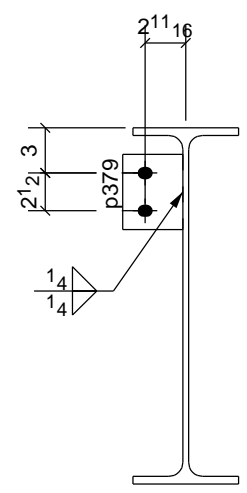


B - B

ONE - BEAM - 13B14

W 23 5/8 x 3/8  
F 7 x 1/2



A - A

SHIP MARK	DIV	ASS'M MARK	NO. PC'S	SECTION	LENGTH		CHEMISTRY	WEIGHT	P.O. NUMBER	REMARKS	PG / ITEM
					FT.	IN.					
13B14	13		1	W24X55	40'-1		A992	2209.9			7/28
		p72	4	FL1/4"X4"	0'-4		A36	1.1			
		p379	2	FL3/8"X4"	0'-5		A36	2.1			
		p380	2	FL3/8"X4"	0'-5		A36	2.1			
TOTAL WEIGHT FOR 1 ASSEMBLY								2222.8			

NOTE: ALL WORKSHOP BOLTS SHALL BE TIGHTENED BY THE "SNUG-TIGHT" CONDITION AS DEFINED BY AISC, U.O.N.

WELDING ELECTRODE E70LH UNLESS NOTED		STEEL SPEC. W-SHAPES ASTM A992 U.N.O. HOLLOW STRUCTURAL SHAPES ASTM A500-B ALL OTHER MATERIAL ASTM A36 UNLESS NOTED		HOLE SIZE 13/160	
<b>ERECTOR'S NOTE</b> STEEL IS FABRICATED WITH "ERECTION MARKS" ON LEFT HAND END OF MEMBERS					
ALL HOLES IN BEAM END CONNECTION CLIP ANGLE OUTSTANDING LEG SHALL BE 13/16x1 HORIZ SLOTS U.N.O.					
PREP		NO. DATE BY		DESCRIPTION OF REVISION	
SHOP PAINT NONE		0 07/16/15 MR FOR FAB		A 04/24/15 MR FOR APPL	
REF DWG.: E2.2.3					
PROJECT HANOVER NEW COURTS BUILDING		RICHMOND, VA (804)55-7181			
LOCATION HANOVER COUNTY VA		ROANA, VA (434)45-1000			
ARCHT. MOSELEY ARCH		CONTR. GULF SEABOARD CONTRACTORS			
MADE IN VA		MR 04/07/2015		CHRD MLK 07/16/15	
ORDER NO. 15-104					
SHEET NO. 13B14					
ITEMS					SEQ 13