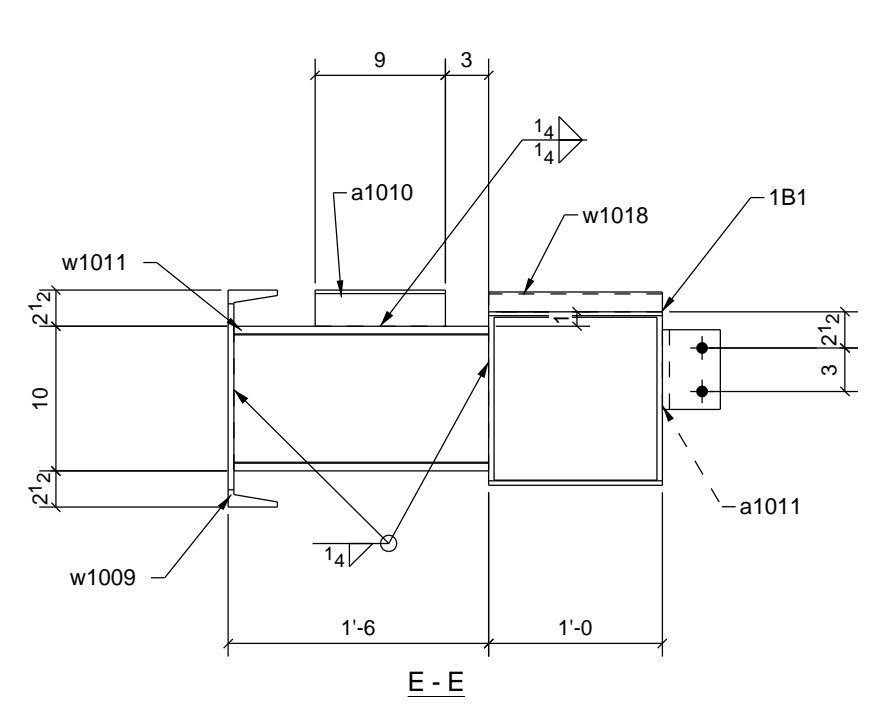
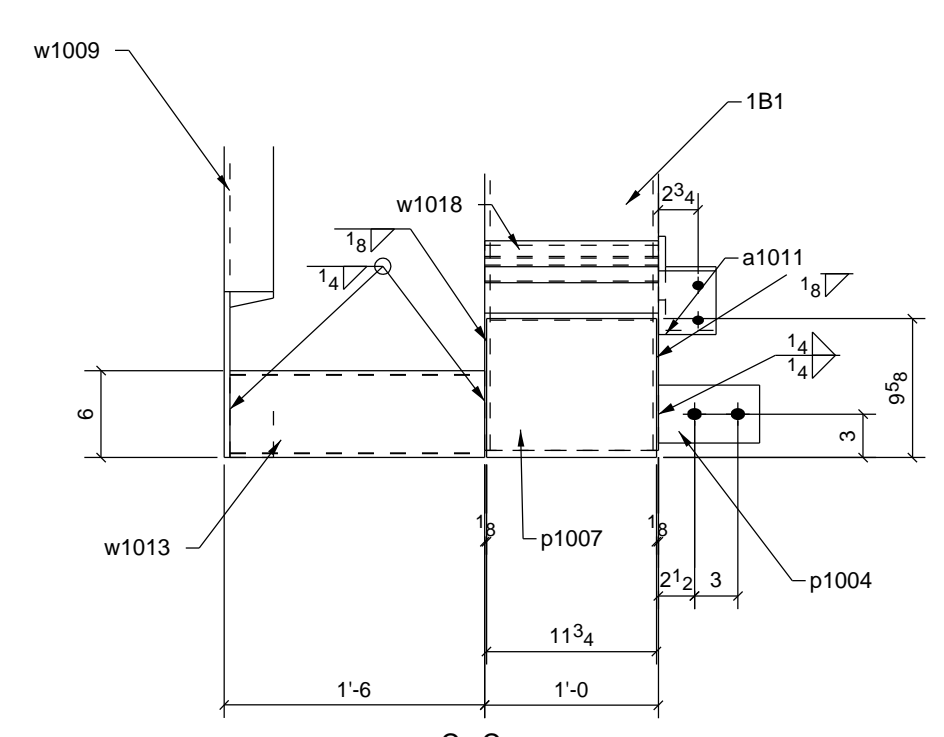


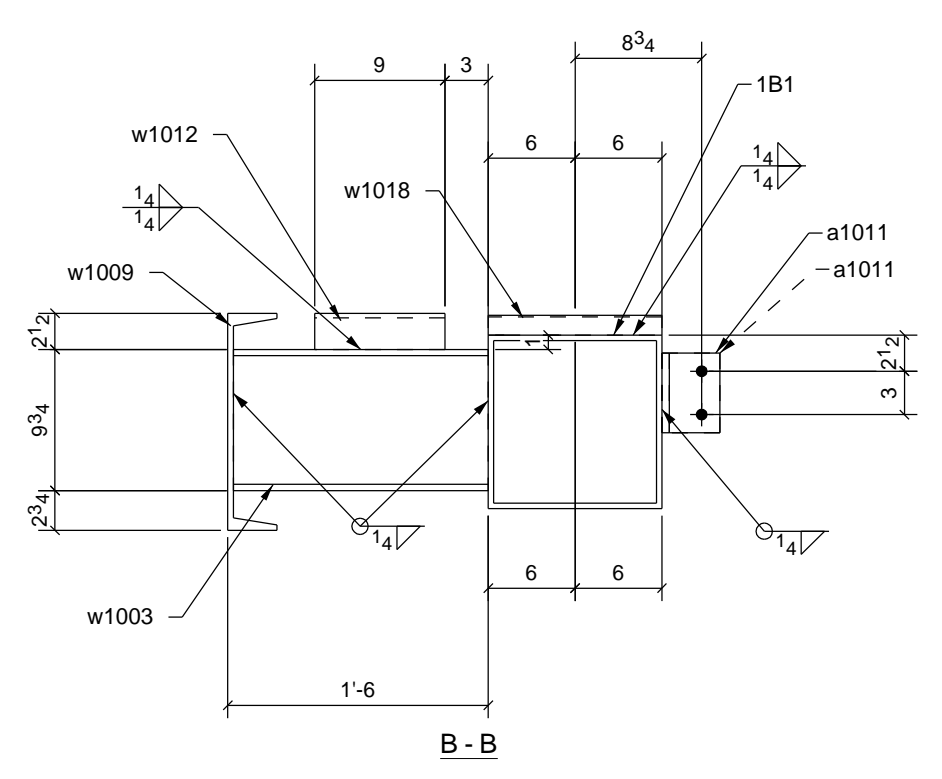
CUTTING DIAGRAM FOR 1B1



E - E



C - C



B - B

ONE - BEAM - 1B1

Conn. Code

Conn. Code

SHP MARK	DIV	ASSM MARK	NO PCS	SECTION	LENGTH		CHEMISTRY	WEIGHT	P.O. NUMBER	REMARKS	PG / ITEM
					FT.	IN.					
1B1	1		1	HSS12X12X3/8	10'-5 1/16		A500-GR.B	567.6			4/7
		a1003	1	L8X6X5/8	1'-3 5/8		A36	37.0			
		a1010	2	L2-1/2X2-1/2X1/4	0'-9		A36	3.0			
		a1011	6	L4X4X1/2	0'-5 1/2		A36	5.8			
		p1004	1	PL3/8"X4"	0'-7		A36	3.0			
		p1007	1	PL1/2"X11 3/4"	1'-3 13/16		A36	27.2			
		p1011	2	PL1/4"X3"	0'-4 1/2		A36	1.0			
		p1012	1	PL1/4"X3"	0'-5 9/16		A36	1.0			
		w1003	2	W10X33	1'-5 5/8		A992	48.5			1/1
		w1005	1	HSS4X4X1/4	5'-0 1/2		A500-GR.B	57.8			4/1
		w1006	1	HSS4X4X1/4	5'-11 1/8		A500-GR.B	68.0			4/3
		w1007	1	HSS4X4X1/4	1'-5 3/4		A500-GR.B	17.0			4/2
		w1009	1	C15X33.9	11'-4 5/8		A36	387.4			2/3
		w1011	2	MC10X28.5	1'-5 5/8		A36	41.8			3/5
		w1012	2	MC6X12	0'-9		A36	9.0			3/4
		w1013	1	MC6X6.5	1'-5 5/8		A36	9.7			3/10
		w1018	4	C3X3.5	1'-0		A36	3.7			
TOTAL WEIGHT FOR 1 ASSEMBLY								1432.1			

NOTE: ALL WORKSHOP BOLTS SHALL BE TIGHTENED BY THE "SNUG-TIGHT" CONDITION AS DEFINED BY AISC, U.O.N.

SHOP NOTE.
ALL WELDS TO BE AESS

WELDING ELECTRODE E70XX/HLH UNLESS NOTED		STEEL SPEC. W-SHAPES ASTM A992 HOLLOW STRUCTURAL SHAPES ASTM A500-B ALL OTHER MATERIAL ASTM A36 UNLESS NOTED		HOLE SIZE 13/160	
ERECTOR'S NOTE STEEL IS FABRICATED WITH "ERECTION MARKS" ON LEFT HAND END OF MEMBERS					
ALL HOLES IN BEAM END CONNECTION CLIP ANGLE OUTSTANDING LEG SHALL BE 13/16x1 HORIZ SLOTS U.N.O					
PREP	SSPC-SP2	SHOP PAINT			
SHOP PAINT		1-SIC STD SHOP PRIMER			
REF DWG.:	E2, E2/1	PROJECT: NORFOLK SOUTHERN RAILWAY CANOPIES			
		LOCATION: NORFOLK AVE, ROANOKE, VA			
		ARCHT.: CROUCH ENGINEERING			
		CONTR.: FAULCONER CONSTRUCTION Co.			
		RICHMOND, VA (804)355-7481		 <small>Company, Incorporated</small> RONA, VA <small>403248-1009</small>	
		REVISIONS		MADE MR [04/28/2017] CHKD. MJK [05/31/17]	
		0 05/31/17 MR FOR FAB		ORDER NO. 27-509	
		A 05/04/17 MR FOR APPL		SHEET NO. 1B1	
		NO. DATE BY DESCRIPTION OF REVISION		SEQ. 1	
ITEMS					