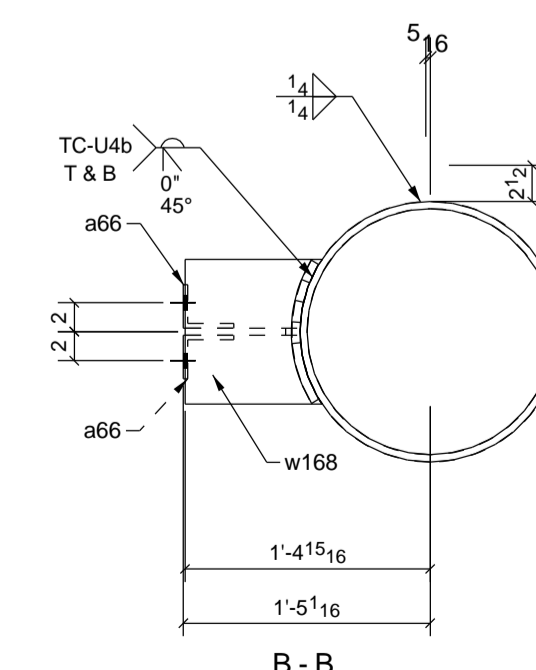
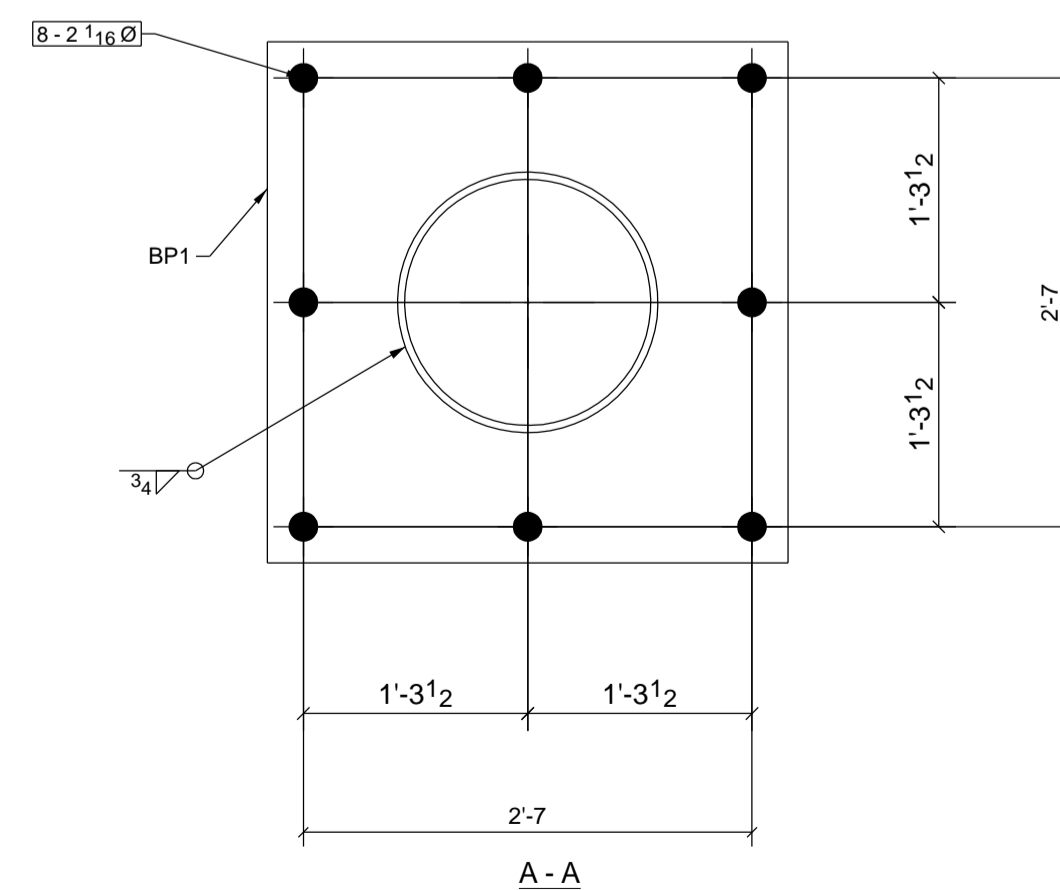
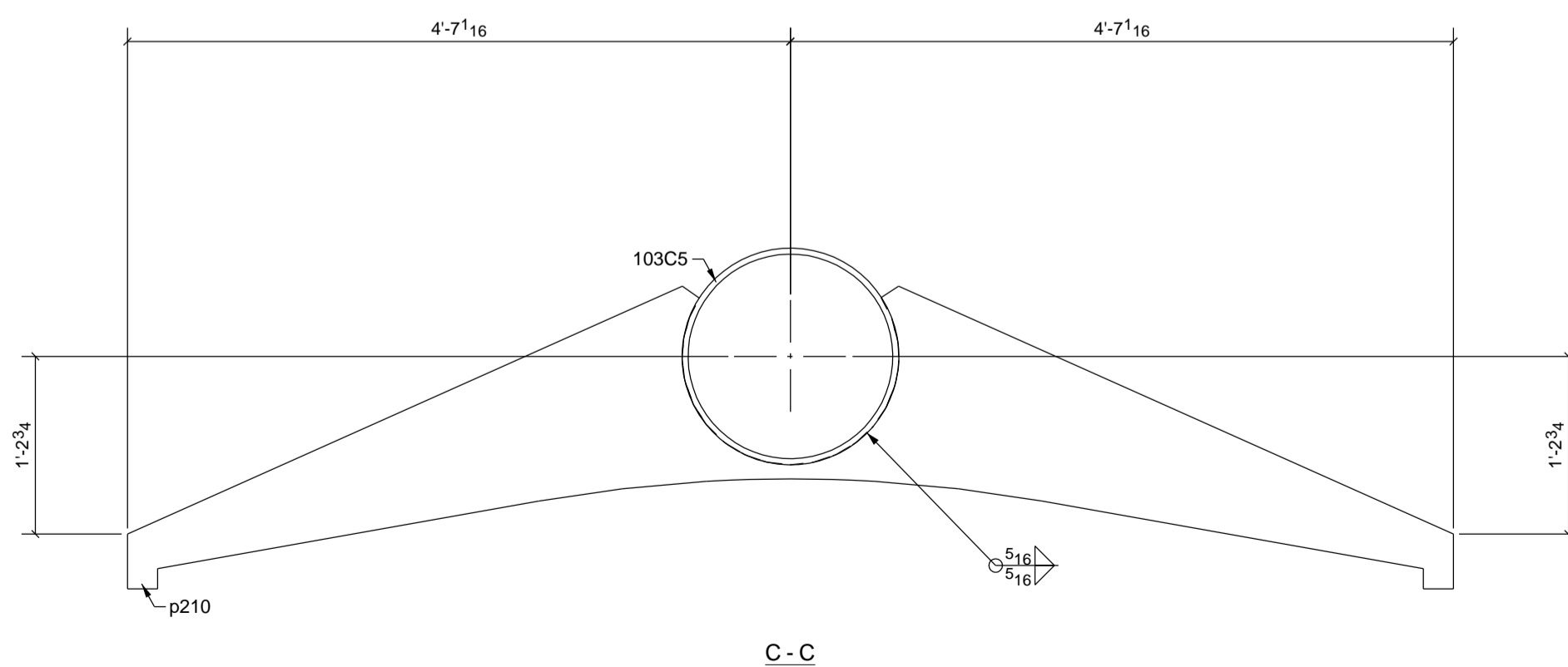
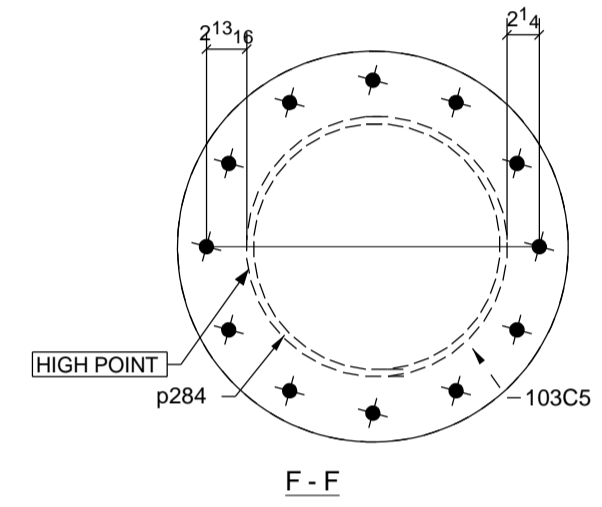
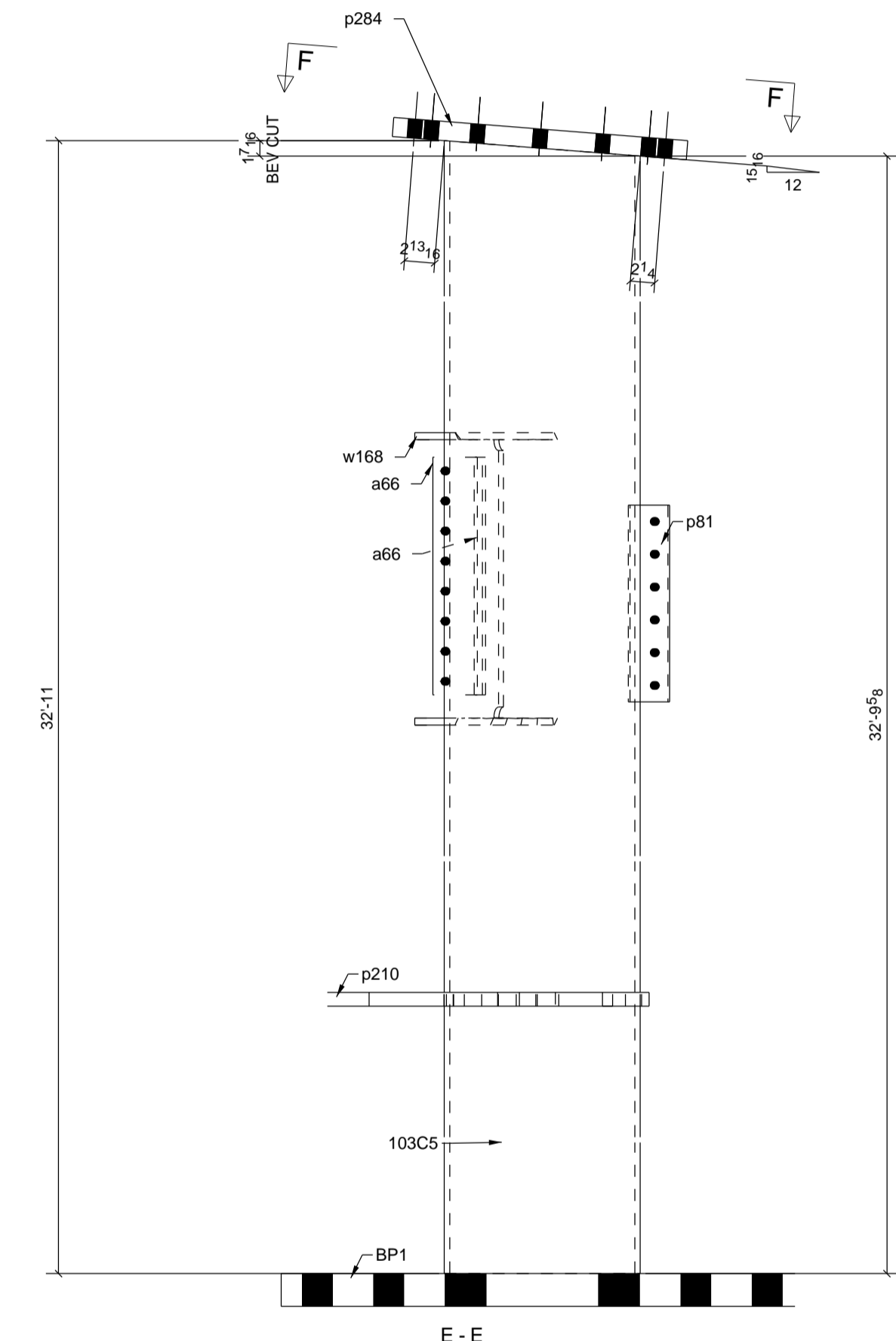
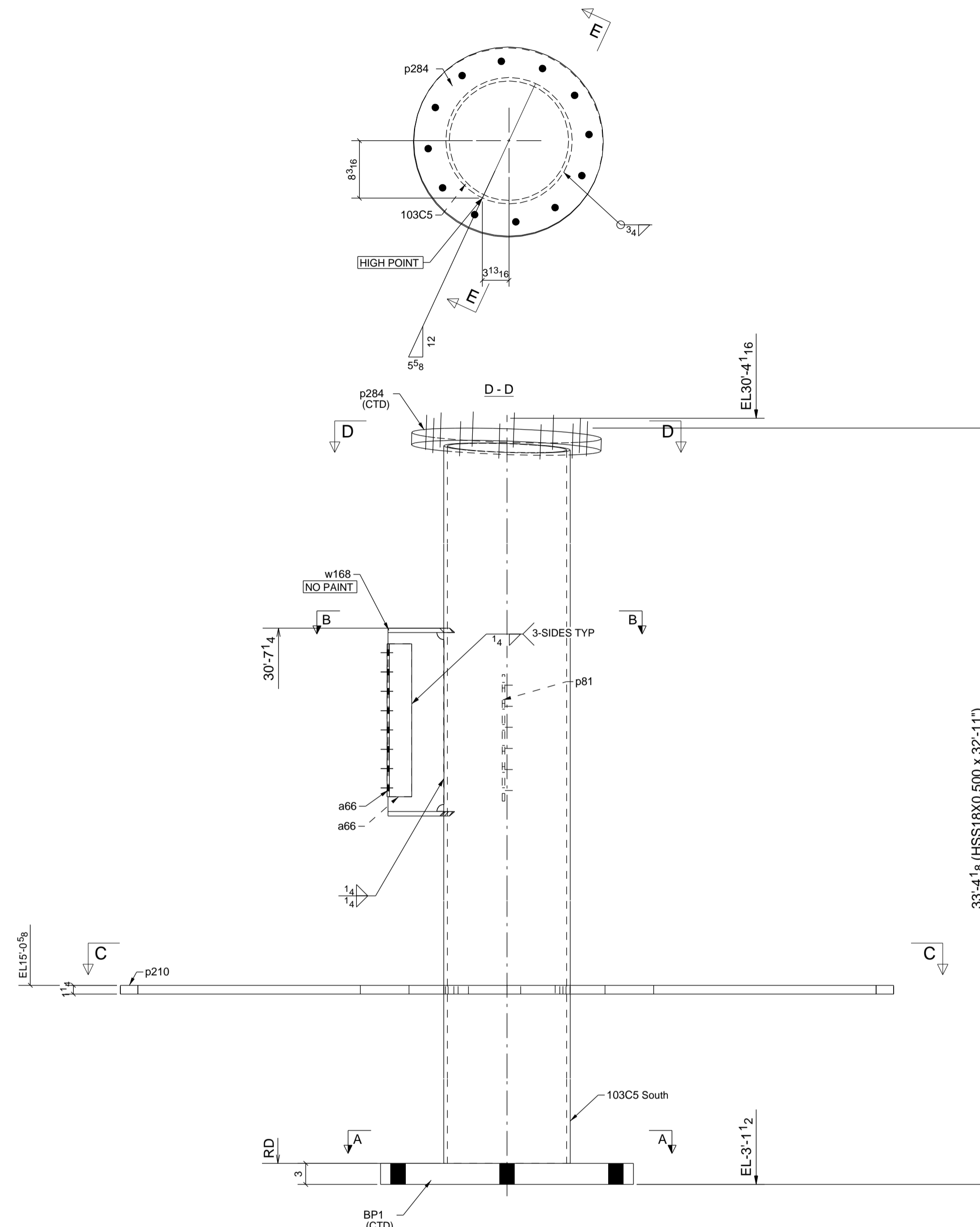
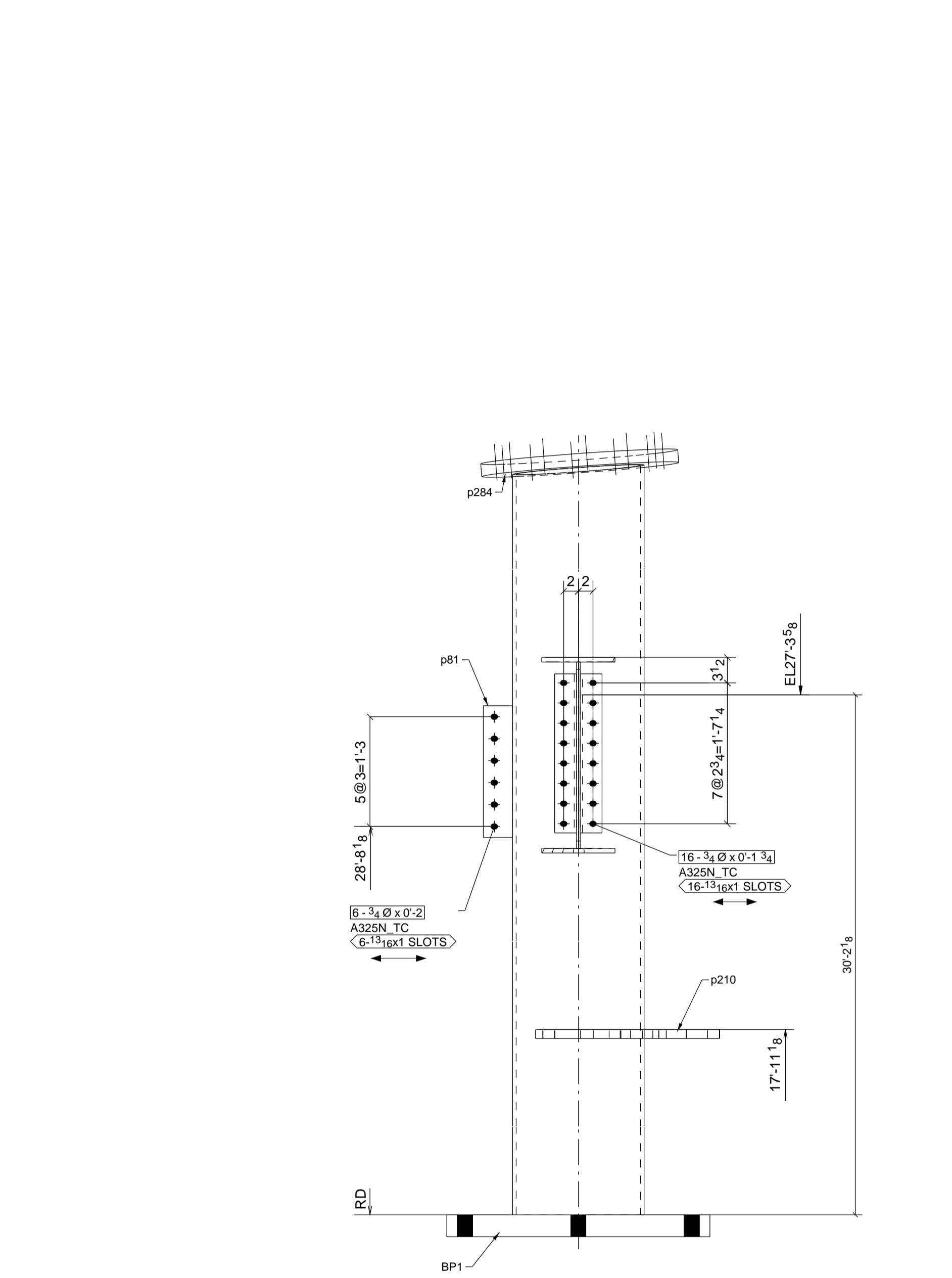


SHIP MARK	DIV	ASSEM MARK	NO PCS	SECTION	LENGTH		CHEMISTRY	WEIGHT	P.O. NUMBER	REMARKS	PG / ITEM
					FT.	IN.					
103C5	103		1	HSS18X0.500	32'-11"		A500-GR.C	2868.0			111/11
		BP1	1	PL3"X36"	3'-0"		A572-GR.50	1102.6			116/1
		a66	2	L3-1/2X3X5/16	1'-9 3/4"		A36	11.9			
		p81	1	FL3/8"X4"	1'-6"		A36	7.7			
		p210	1	PL1 1/4"X49 1/16"	8'-6 3/8"		A36	339.0			
		p284	1	D27"	0'-1 3/4"		A36	283.2			
		w168	1	W27X84	0'-9 1/2"		A992	66.8			102/1
TOTAL WEIGHT FOR 1 ASSEMBLY								4691.1			

NOTE: ALL WORKSHOP BOLTS SHALL BE TIGHTENED BY THE "SNUG-TIGHT" CONDITION AS DEFINED BY AISC, U.O.N.



ONE - COLUMN - 103C5

GRID : HH/1

THIS COLUMN TO BE FABRICATED AS AESS STEEL

TRUE VIEW FOR BEV CUT

WELDING ELECTRODE E70XXLH UNLESS NOTED		STEEL SPEC. W-SHAPES ASTM A992 HOLLOW STRUCTURAL SHAPES ASTM A500-B ALL OTHER MATERIAL ASTM A36 UNLESS NOTED		HOLE SIZE 13/160	
ERECTOR'S NOTE STEEL IS FABRICATED WITH "ERECTION MARKS" ON LEFT HAND END OF MEMBERS					
ALL HOLES IN BEAM END CONNECTION CLIP ANGLE OUTSTANDING LEG SHALL BE 13/16x1 HORIZ SLOTS U.N.O					
PREP	SSPC-SP3				
SHOP PAINT	1-SIC STD SHOP PRIMER (UNO)				
REF DWG.	E135,E135/A,E135/C,				
RICHMOND, VA (804)355-7481		LIPHART STEEL Company, Incorporated		RONA, VA. 40248-1009	
PROJECT	SCIENCE MUSEUM OF VIRGINIA				
LOCATION	RICHMOND VA.				
ARCHT.	PFEIFFER PARTNERS				
CONTR.					
MADE MR 10/21/2015		CHKD. MJK	12/07/15		
ORDER NO. 15-114					
SHEET NO. 103C5					
ITEMS		SEQ.	103		