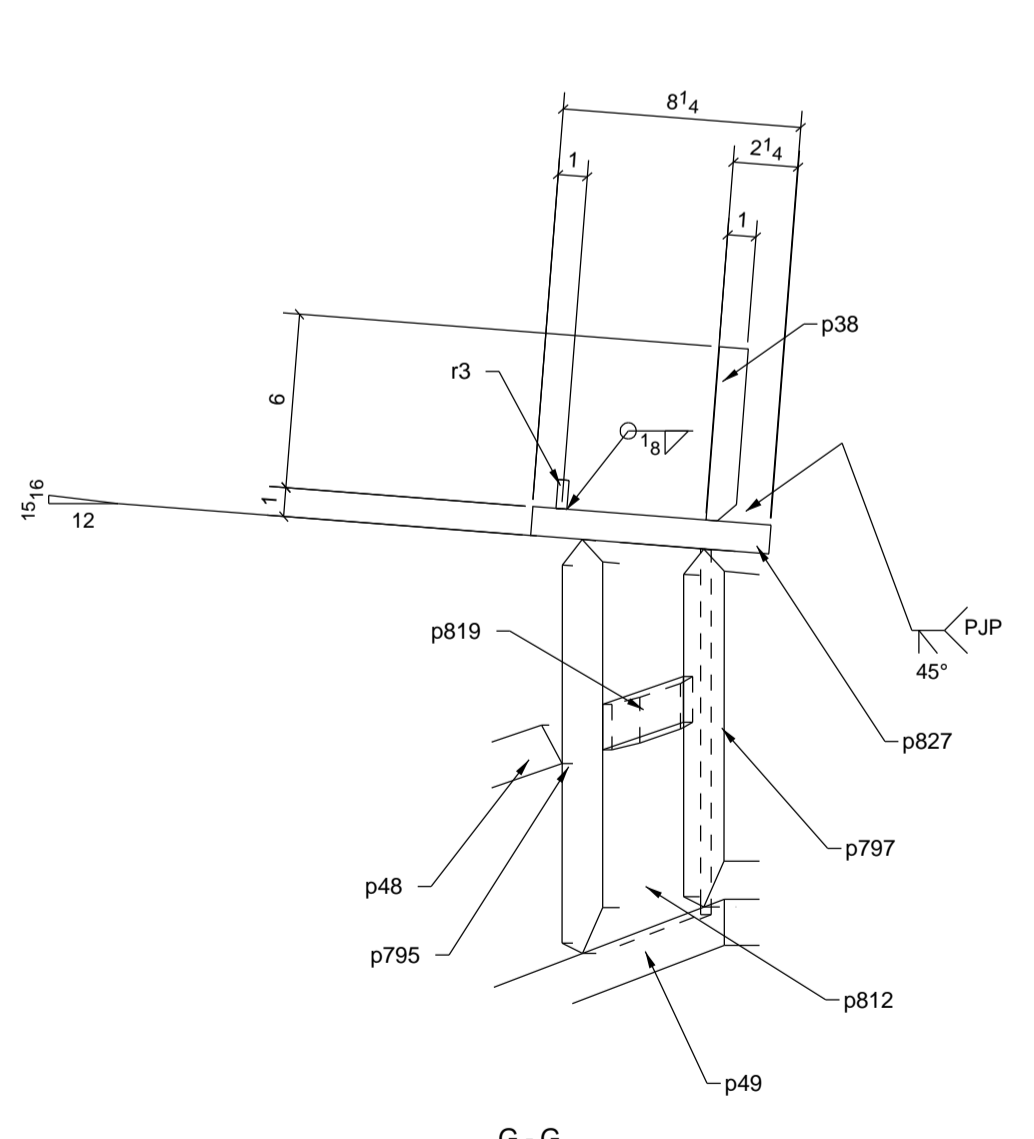
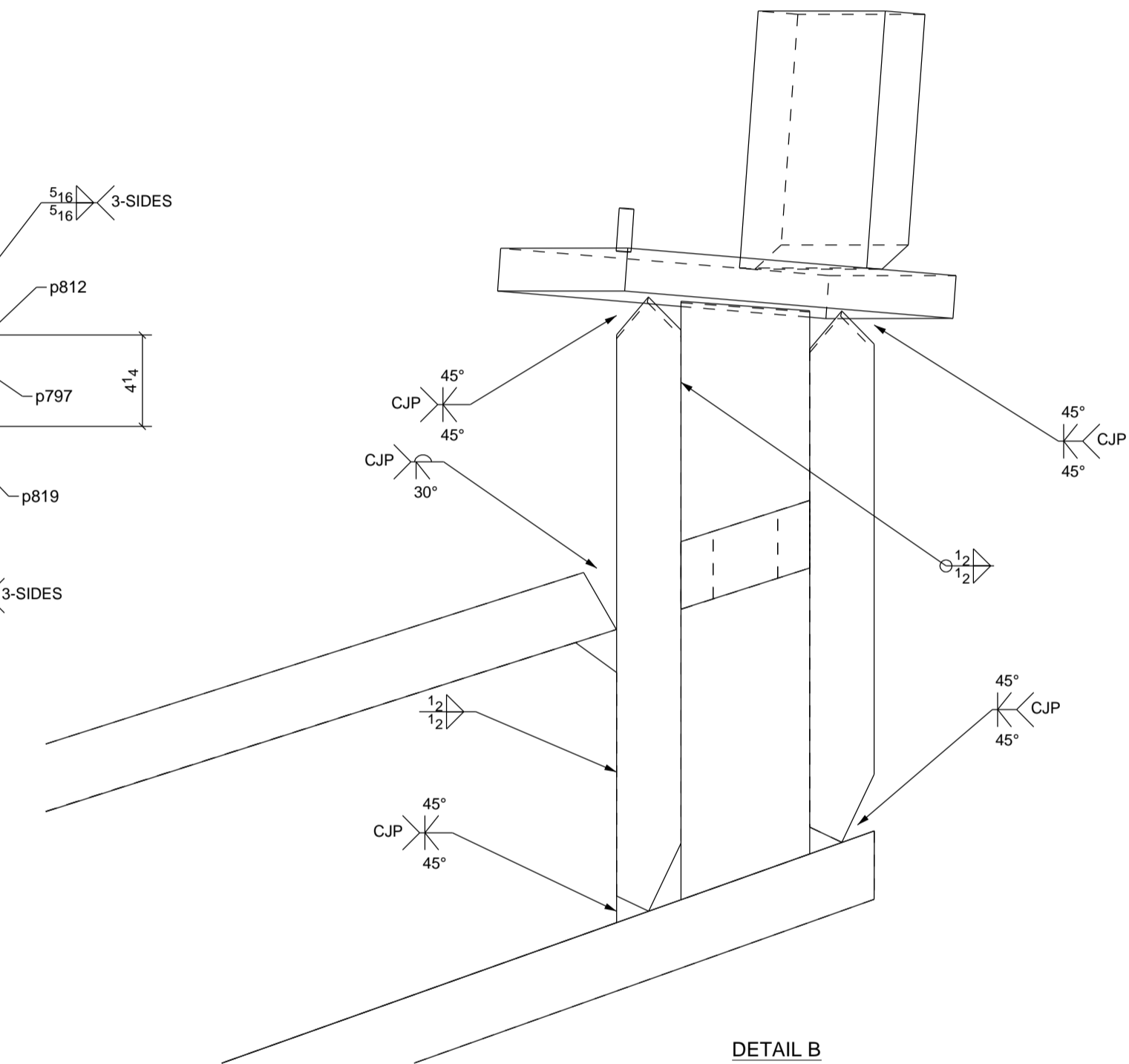
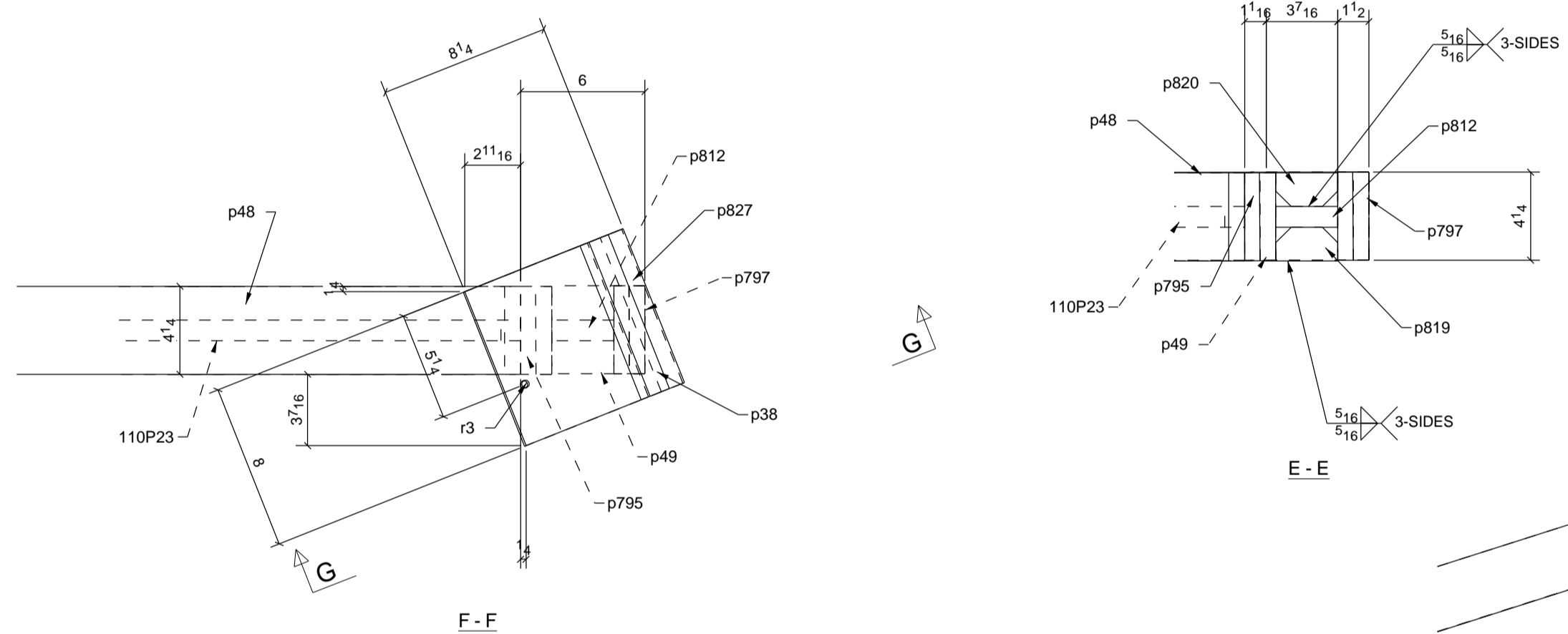
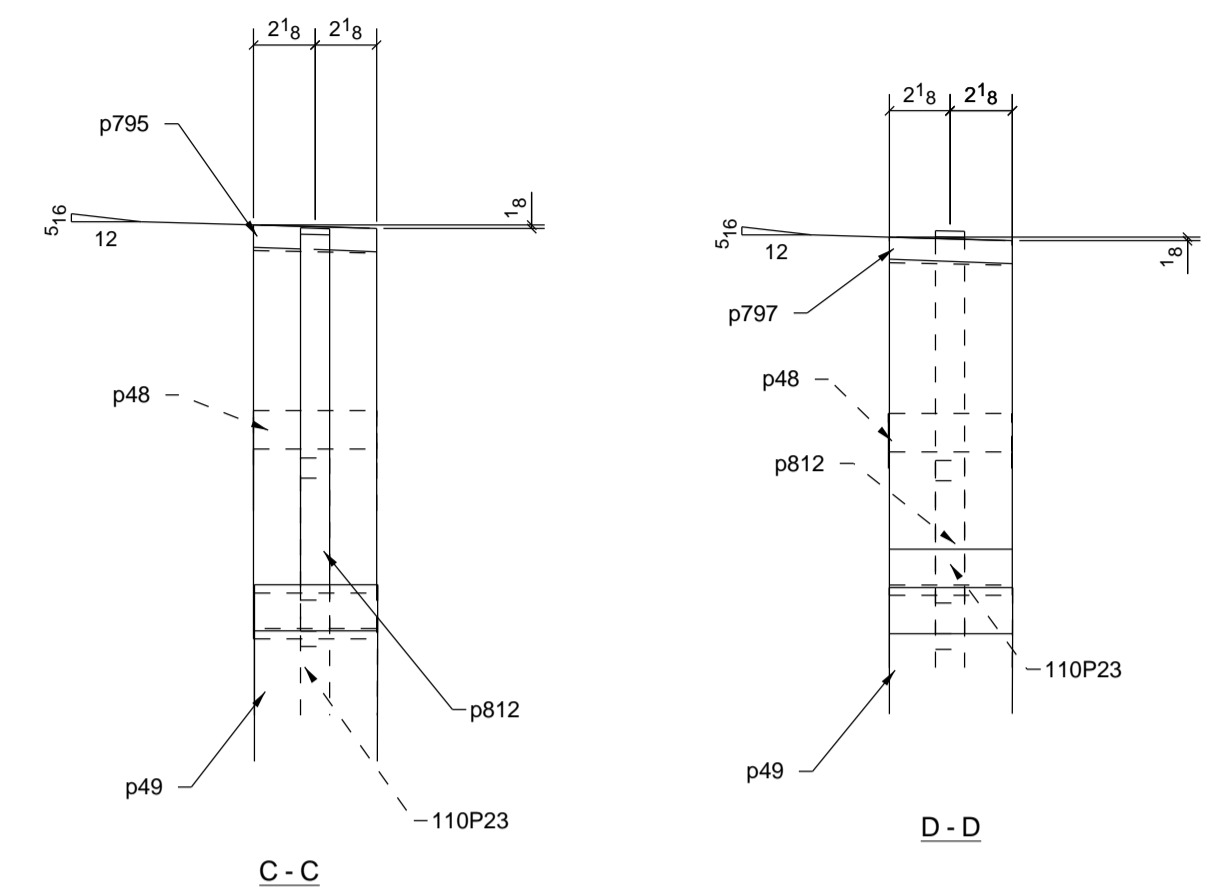


**SHOP NOTE**  
**CUTTING DIAGRAM FOR MAIN PIECE**

ONE - PLATE - 110P23


SHP MARK	DIV	ASSM MARK	NO PCS	SECTION	LENGTH		CHEMISTRY	WEIGHT	P.O. NUMBER	REMARKS	PG / ITEM	
					FT.	IN.						
110P23	110		1	PL1"X10 3/8"	10'-2 15/16		A572-GR.50	287.3			115/23	
		p38	1	PL1"X8"	0'-6		A572-GR.50	13.2			115/18	
		p48	1	PL1 1/2"X4 1/4"	10'-0 3/8		A572-GR.50	216.1			115/19	
		p49	1	PL1 1/2"X4 1/4"	10'-8 5/8		A572-GR.50	230.8				
		p795	1	PL1 1/2"X4 1/4"	1'-2 5/16		A572-GR.50	24.1				
		p797	1	PL1 1/2"X4 1/4"	1'-0 3/8		A572-GR.50	20.6				
		p812	1	PL1"X3"	1'-1 15/16		A572-GR.50	11.3				
		p819	1	PL1 1/2"X1 5/8"	0'-3 5/8		A572-GR.50	1.9			115/18	
		p820	1	PL1 1/2"X1 5/8"	0'-3 5/8		A572-GR.50	1.9			115/18	
		p827	1	PL1"X8"	0'-8 1/4		A572-GR.50	18.7				
		r3	1	RB3/8"	0'-1		A36	0.0				
TOTAL WEIGHT FOR 1 ASSEMBLY								826.0				

NOTE: ALL WORKSHOP BOLTS SHALL BE TIGHTENED BY THE "SNUG-TIGHT" CONDITION AS DEFINED BY AISC, U.O.N.



**THIS TAPERED BEAM TO BE**  
**FABRICATED AS AESS STEEL**

**SHOP NOTE**  
**PLEASE USE FITTING SHEETS TO CUT AND**  
**SHAPE ALL PIECES AND USE THIS DRG TO**  
**FIT TOGETHER.**

WELDING ELECTRODE E70XXLH UNLESS NOTED	STEEL SPEC. W-SHAPES ASTM A992 HOLLOW STRUCTURAL SHAPES ASTM A500-B ALL OTHER MATERIAL ASTM A36 UNLESS NOTED	HOLE SIZE 13/160
<b>ERECTOR'S NOTE</b> STEEL IS FABRICATED WITH "ERECTION MARKS" ON LEFT HAND END OF MEMBERS		
ALL HOLES IN BEAM END CONNECTION CLIP ANGLE OUTSTANDING LEG SHALL BE 13/16x1 HORIZ SLOTS U.N.O		
PREP	SSPC-SP3	
SHOP PAINT	1-SIC 9097 TMEC-ZINC PAINT	
REF DWG:	E132/1	
PROJECT	SCIENCE MUSEUM OF VIRGINIA	
LOCATION	RICHMOND VA.	
ARCHT.	PFEIFFER PARTNERS	
CONTR.		
 <small>AMERICAN INSTITUTE OF STEEL CONSTRUCTORS</small> <small>CERTIFIED FABRICATOR</small>		<small>MADE</small> MR 05/18/2016 <small>CHKD.</small> MJK 06/08/16 <small>ORDER NO.</small> 15-114 <small>SHEET NO.</small> 110P23
ITEMS		SEQ 110