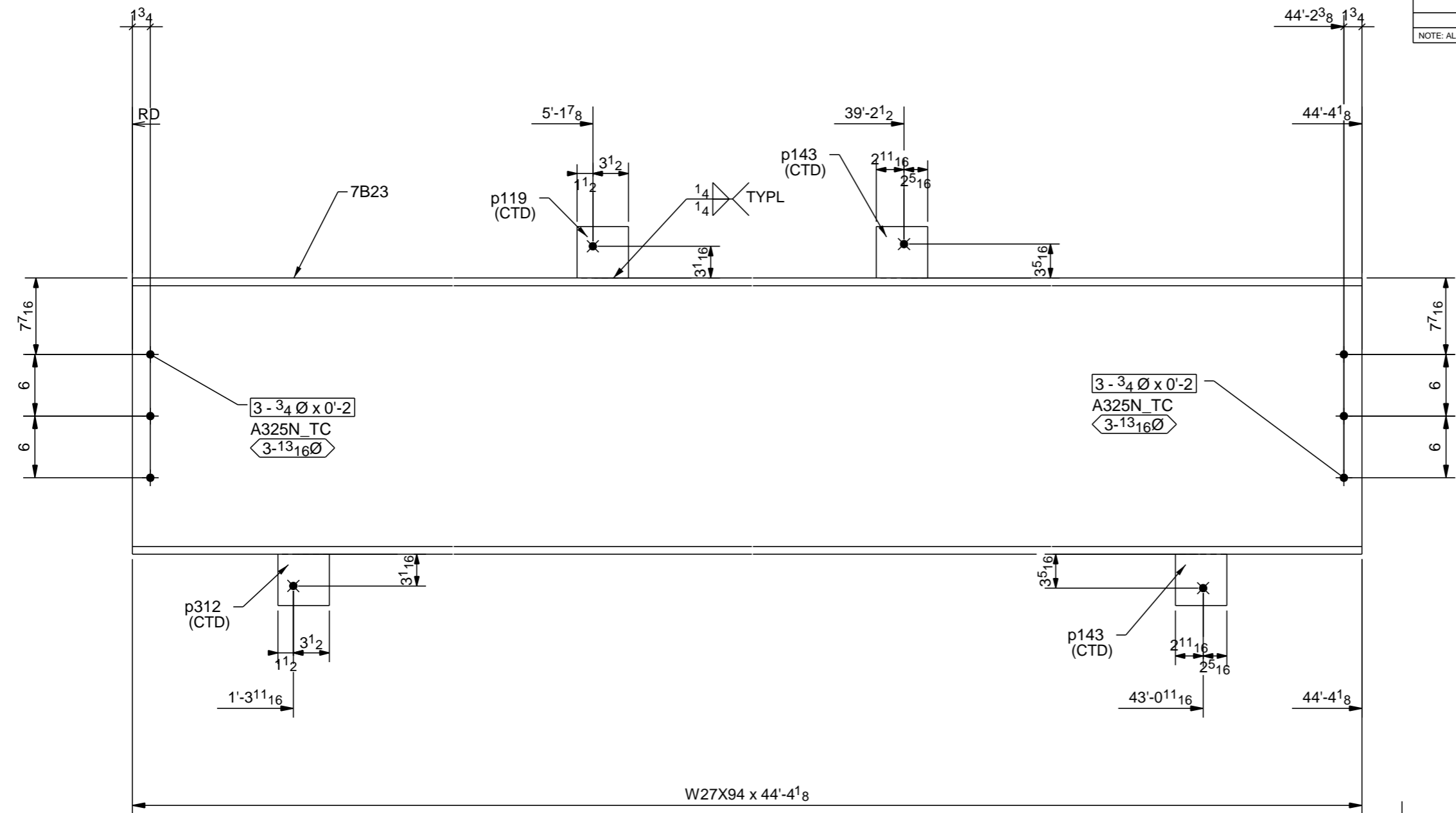


SHIP MARK	DIV	ASSM MARK	NO PCS	SECTION	LENGTH		CHEMISTRY	WEIGHT	P.O. NUMBER	REMARKS	PG./ITEM
					FT.	IN.					
7B23	7		1	W27X94	44'-4 1/8"	A992	4180.2				22/1
		p119	1	FL3/8"X5"	0'-5"	A36	2.7				
		p143	2	FL3/8"X5"	0'-5"	A36	2.7				
		p312	1	FL3/8"X5"	0'-5"	A36	2.7				
TOTAL WEIGHT FOR 1 ASSEMBLY								4190.9			

NOTE: ALL WORKSHOP BOLTS SHALL BE TIGHTENED BY THE "SNUG-TIGHT" CONDITION AS DEFINED BY AISC, U.O.N.



ONE - BEAM - 7B23

W	26 7/8 x 1/2
F	10 x 3/4

WELDING ELECTRODE E70XX UNLESS NOTED		STEEL SPEC. W-SHAPES ASTM A992 HOLLOW STRUCTURAL SHAPES ASTM A500-B ALL OTHER MATERIAL ASTM A36 UNLESS NOTED		HOLE SIZE 13/16 Ø	
<p>ERECTOR'S NOTE</p> <p>STEEL IS FABRICATED WITH "ERECTION MARKS" ON LEFT HAND END OF MEMBERS</p>					
<p>ALL HOLES IN BEAM END CONNECTION CLIP ANGLE OUTSTANDING LEG SHALL BE 13/16x1 HORIZ SLOTS U.N.O.</p>					
PREP		SSPC-SP2			
SHOP PAINT		1-SIC SHERWIN WILLIAMS STD GRAY PRIMER (M50 AV11)			
REF DWG.:		E5,E21			
CONTR.		W.M. JORDAN Co.			
PROJECT		Virginia_Tech_Indoor_Facility			
LOCATION		BLACKSBURG, VA			
ARCHT.		HKS Inc.			
MADE		MR	07/24/2014	CHKD.	MJK 08/12/14
ORDER NO.		14-514			
SHEET NO.		7B23			
ITEMS		SEQ 7			

RICHMOND, VA (804)355-7481

Company, Incorporated

RONA, VA (404)248-1009

PROJECT: Virginia_Tech_Indoor_Facility

LOCATION: BLACKSBURG, VA

ARCHT.: HKS Inc.

CONTR.: W.M. JORDAN Co.

MADE: MR 07/24/2014

CHKD.: MJK 08/12/14

ORDER NO.: 14-514

SHEET NO.: 7B23