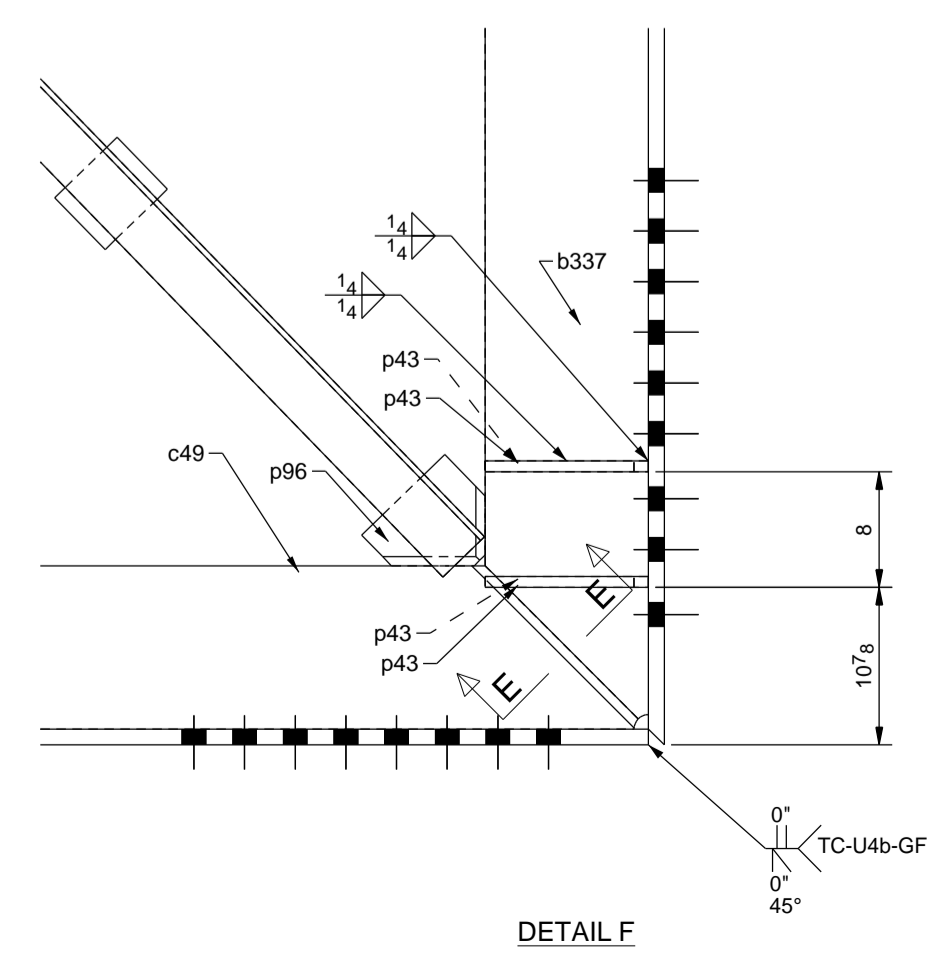
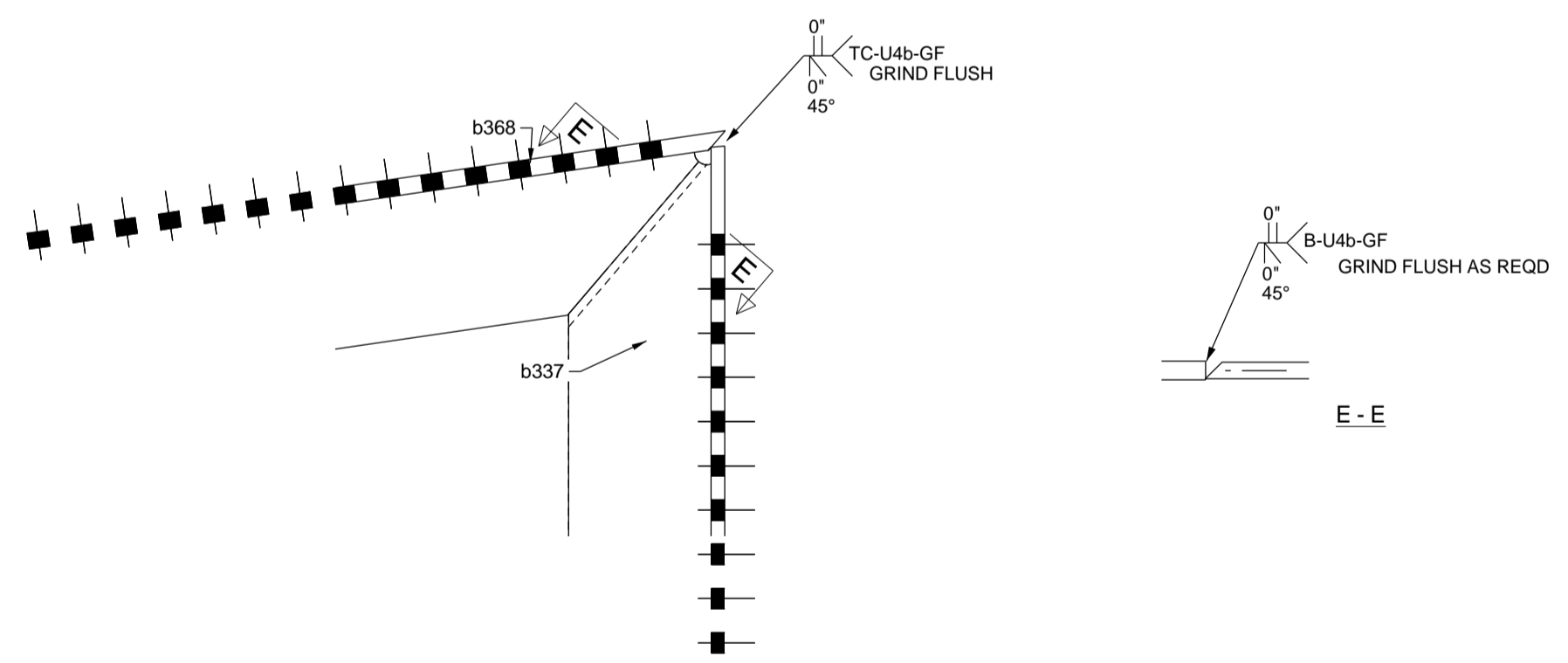
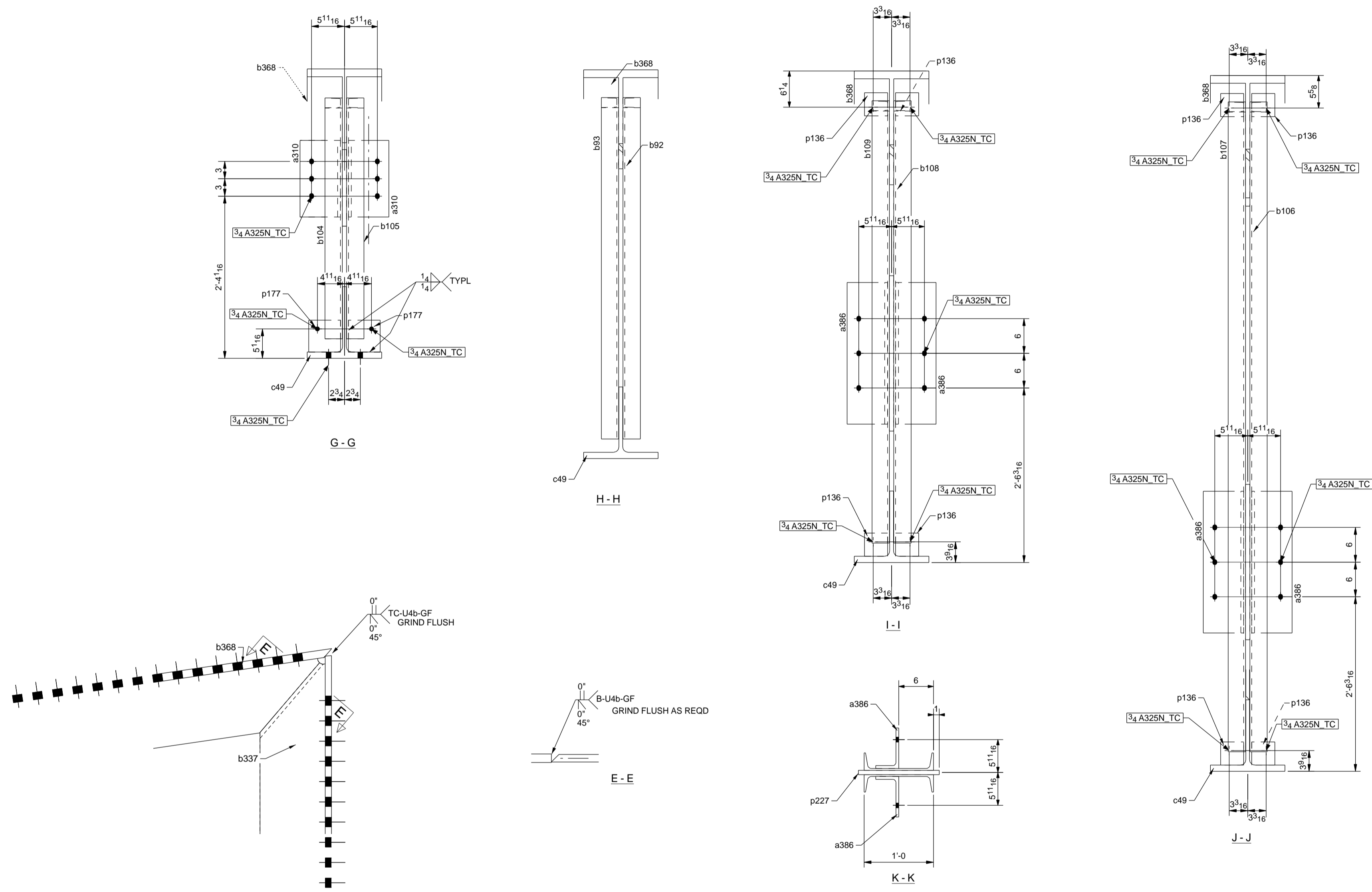


SHIP MARK	DIV	ASSM MARK	NO. PCS	SECTION	LENGTH		CHEMISTRY	WEIGHT	P.O. NUMBER	REMARKS	PG / ITEM
					FT.	IN.					
7C2	7		1	W36X170	12'-4"		A992	2102.9			2/3
		BP1	1	PL2"X31"	3'-10"		A572-GR.50	808.8			
		a30	2	L4X4X3/8	8'-0 7/8"		A572-GR.50	78.6			19/9
		a31	2	L4X4X3/8	4'-10 7/16"		A572-GR.50	47.4			19/3
		a39	2	L4X4X3/8	10'-0 7/16"		A572-GR.50	97.7			19/6
		a40	2	L4X4X3/8	11'-4 13/16"		A572-GR.50	111.0			19/7
		a41	2	L4X4X3/8	9'-2 15/16"		A572-GR.50	90.0			19/8
		a51	2	L4X4X3/8	10'-8"		A572-GR.50	103.8			19/5
		a310	2	L7X4X1/2	1'-1 1/4"		A36	19.7			
		a386	4	L7X4X1/2	2'-0 1/2"		A36	36.5			
		b92	1	C12X20.7	4'-11 1/16"		A572-GR.50	101.8			33/1
		b93	1	C12X20.7	4'-11 1/16"		A572-GR.50	101.8			33/1
		b94	1	C12X20.7	8'-0 15/16"		A572-GR.50	167.2			33/2
		b95	1	C12X20.7	8'-0 15/16"		A572-GR.50	167.2			33/2
		b104	1	C12X20.7	3'-5 11/16"		A572-GR.50	71.8			33/5
		b105	1	C12X20.7	3'-5 11/16"		A572-GR.50	71.8			33/5
		b106	1	C12X20.7	9'-4 7/16"		A572-GR.50	193.8			33/6
		b107	1	C12X20.7	9'-4 7/16"		A572-GR.50	193.8			33/6
		b108	1	C12X20.7	6'-4 1/2"		A572-GR.50	131.9			33/7
		b109	1	C12X20.7	6'-4 1/2"		A572-GR.50	131.9			33/7
		b337	1	WT12X73	11'-1 13/16"		A992	815.8			1/10
		b368	1	WT12X88	57'-1 7/16"		A992	5015.3			1/7
		c49	1	WT12X73	56'-3 5/16"		A992	4117.5			1/9
		p9	1	PLT2"X31"	0'-7"		A572-GR.50	123.1			
		p43	4	PL3/4"X6 1/16"	0'-11 5/16"		A572-GR.50	14.5			
		p56	1	PL3/4"X8"	1'-1 1/4"		A572-GR.50	11.6			
		p57	1	PL3/4"X8"	1'-0"		A572-GR.50	10.4			
		p58	1	PL3/4"X8"	0'-8 3/4"		A572-GR.50	8.6			
		p59	1	PL3/4"X8"	0'-11 3/4"		A572-GR.50	14.3			
		p96	1	PL5/8"X8"	0'-6 15/16"		A572-GR.50	7.1			
		p99	1	PL5/8"X8"	0'-9 11/16"		A572-GR.50	6.9			
		p125	16	PL3/4"X5"	0'-6"		A572-GR.50	6.4			
		p136	8	FL3/8"X4"	0'-4"		A36	1.7			
		p137	2	PL3/8"X5 1/2"	0'-5 1/2"		A36	3.2			
		p177	2	PL3/8"X5 1/2"	0'-5 1/2"		A36	3.2			
		p227	2	PL3/4"X14"	2'-2 7/8"		A572-GR.50	80.0			
		p310	1	PL3/4"X14"	1'-1 1/4"		A572-GR.50	36.3			
TOTAL WEIGHT FOR 1 ASSEMBLY					16000.4						

NOTE: ALL WORKSHOP BOLTS SHALL BE TIGHTENED BY THE "SNUG-TIGHT" CONDITION AS DEFINED BY AISC, U.O.N.



WELDING ELECTRODE E70XX UNLESS NOTED

STEEL SPEC. W-SHAPES ASTM A992
HOLLOW STRUCTURAL SHAPES ASTM A500-B
ALL OTHER MATERIAL ASTM A36 UNLESS NOTED

HOLE SIZE 13/16 Ø

ERECTOR'S NOTE
STEEL IS FABRICATED WITH "ERECTION MARKS" ON LEFT HAND END OF MEMBERS

ALL HOLES IN BEAM END CONNECTION CLIP ANGLE OUTSTANDING LEG SHALL BE 13/16x1 HORIZ SLOTS U.N.O

PREP SS-SPC-SP2

SHOP PAINT 1-SIC SHERWIN WILLIAMS STD
GRAY PRIMER (#B50 AV11)(UNO)

REF DWG.: E13

NO.	DATE	BY	DESCRIPTION OF REVISION
1	09/15/14	MR	REVISED PAINT NOTE
0	07/11/14	MR	ISSUE FOR FAB
A	07/08/14	MR	FOR APPL

LIPHART STEEL
Company, Incorporated

RICHMOND, VA (804)555-7481

PROJECT: Virginia_Tech_Indoor_Facility
LOCATION: BLACKSBURG, VA
ARCHT.: HKS Inc.
CONTR.: W.M. JORDAN Co.

MADE MR 07/05/2014 CHRD MJK 09/15/14

ORDER NO. 14-514
SHEET NO. 7C2A

AISC **CERTIFIED FABRICATOR**