

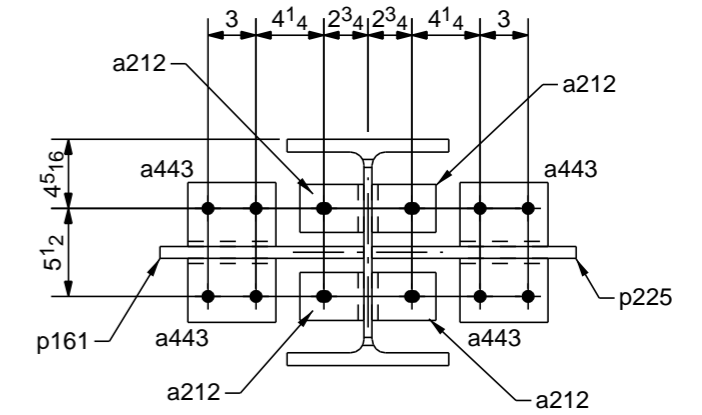
C - C

ONE - BEAM - 9B41

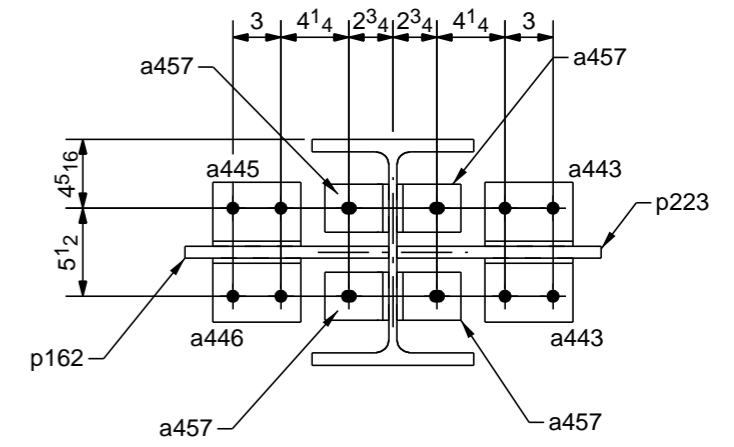
W	14 1/8 x 7/16
F	10 1/8 x 13/16

SHIP MARK	DIV	ASSM MARK	NO. PCS	SECTION	LENGTH		CHEMISTRY	WEIGHT	P.O. NUMBER	REMARKS	PG./ITEM
					FT.	IN.					
9B41	9		1	W14X74	33'-0 1/2		A992	2451.3			9/3
		a212	4	L4X4X3/8	0'-3		A36	2.4			
		a443	6	L4X3-1/2X5/16	0'-5 1/2		A36	3.5			
		a445	1	L4X3-1/2X5/16	0'-5 1/2		A36	3.5			
		a446	1	L4X3-1/2X5/16	0'-5 1/2		A36	3.5			
		a457	4	L4X4X3/8	0'-3		A36	2.4			
		p28	1	PL1/4"X5"	0'-5		A36	1.8			
		p147	1	FL3/8"X5"	0'-5		A36	2.7			
		p161	1	PL3/4"X12 3/4"	1'-2 1/4		A36	36.8			
		p162	1	PL3/4"X12 3/4"	1'-2 1/4		A36	36.6			
		p223	1	PL3/4"X12 3/4"	1'-2 1/4		A36	36.5			
		p225	1	PL3/4"X12 3/4"	1'-2 1/4		A36	36.7			
TOTAL WEIGHT FOR 1 ASSEMBLY								2649.9			

NOTE: ALL WORKSHOP BOLTS SHALL BE TIGHTENED BY THE "SNUG-TIGHT" CONDITION AS DEFINED BY AISC, U.O.N.



A - A



B - B

WELDING ELECTRODE E70XX UNLESS NOTED		STEEL SPEC. W-SHAPES ASTM A992 HOLLOW STRUCTURAL SHAPES ASTM A500-B ALL OTHER MATERIAL ASTM A36 UNLESS NOTED		HOLE SIZE 13/16 Ø
ERECTOR'S NOTE STEEL IS FABRICATED WITH "ERECTION MARKS" ON LEFT HAND END OF MEMBERS				
ALL HOLES IN BEAM END CONNECTION CLIP ANGLE OUTSTANDING LEG SHALL BE 13/16x1 HORIZ SLOTS U.N.O.				
PREP	_____			
SHOP PAINT	NO PAINT _____			
REF DWG.: E15	_____			
REVISIONS		NO. DATE BY DESCRIPTION OF REVISION		
1	09/12/14	MR	REVD PAINT NOTE	
0	09/02/14	MR	ISSUE FOR FAB	
A	08/05/14	MR	ISSUE FOR APPL	
RICHMOND, VA (804)355-7481				RONA, VA (404)248-1009
PROJECT	Virginia_Tech_Indoor_Facility			
LOCATION	BLACKSBURG, VA			
ARCHT.	HKS Inc.			
CONTR.	W.M. JORDAN Co.			
				MADE MR 07/22/2014 CHD. MJK 09/12/14
ITEMS		ORDER NO. 14-514		SHEET NO. 9B41
		SEQ 9		