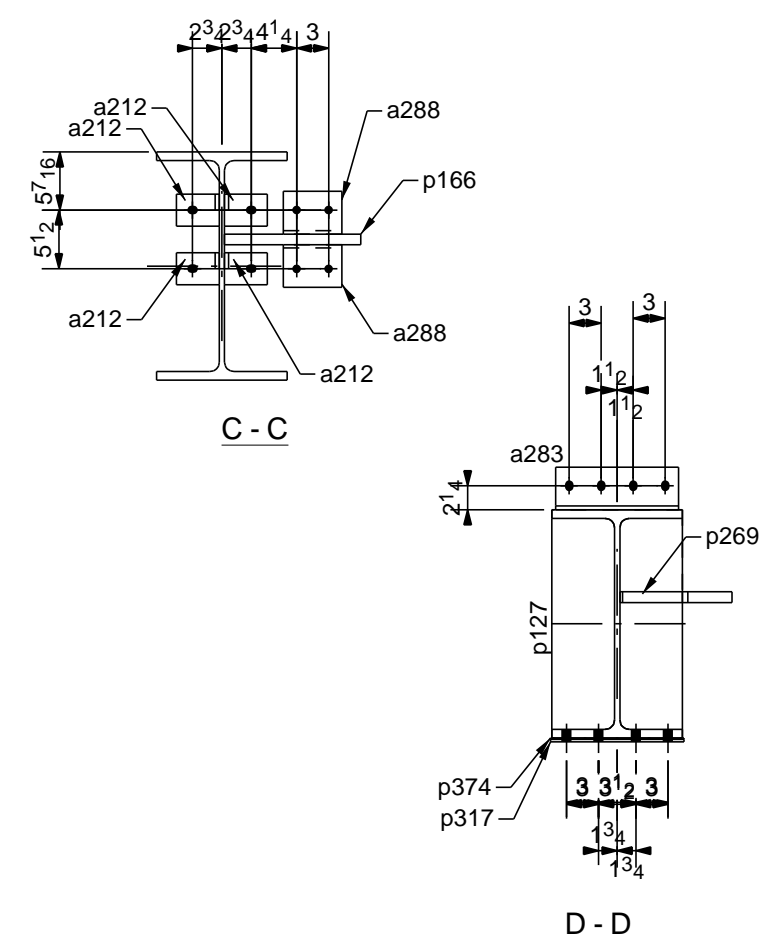


SHIP MARK	DIV	ASSEM MARK	NO PCS	SECTION	LENGTH		CHEMISTRY	WEIGHT	P.O. NUMBER	REMARKS	PG./ITEM	
					FT.	IN.						
9B68	9		1	W21X101	44'-2 1/4	A992	4481.1				9/1	
		a212	4	L4X4X3/8	0'-3	A36	2.4					
		a283	1	L4X3-1/2X3/8	0'-11 1/2	A36	8.7					
		a288	2	L4X3-1/2X5/16	0'-5 1/2	A36	3.5					
		a389	2	L3-1/2X3X5/16	0'-5 1/2	A36	3.0					
		b219	1	W10X22	1'-9 5/16	A992	39.2				11/1	
		p119	1	FL3/8"X5"	0'-5	A36	2.7					
		p127	1	PL1/2"X12 1/4"	1'-9 3/8	A36	37.1					
		p128	1	PL1/2"X5 3/4"	1'-7 11/16	A36	16.0					
		p129	1	PL1/2"X5 3/4"	0'-11 7/8	A36	9.6					
		p130	1	FL1/2"X4"	1'-7 11/16	A36	11.1					
		p166	1	PL1"X12 3/4"	1'-3 1/4	A36	53.9					
		p269	1	PL1"X10 1/2"	1'-5	A36	46.2					
		p317	1	FL1/4"X3"	1'-0 1/2	A36	2.7					
		p374	1	PL1/8"X3"	1'-0 1/2	A36	1.3					
		p377	1	PL1/2"X5 3/4"	0'-6 7/8	A36	5.5					
		p399	1	PL1"X25 13/16"	4'-4 13/16	A36	338.9					
		p462	1	FL3/8"X5"	0'-5	A36	2.7					
TOTAL WEIGHT FOR 1 ASSEMBLY								5079.5				

NOTE: ALL WORKSHOP BOLTS SHALL BE TIGHTENED BY THE "SNUG-TIGHT" CONDITION AS DEFINED BY AISC, U.O.N.



WELDING ELECTRODE E70XX UNLESS NOTED		STEEL SPEC. W-SHAPES ASTM A992 HOLLOW STRUCTURAL SHAPES ASTM A500-B ALL OTHER MATERIAL ASTM A36 UNLESS NOTED		HOLE SIZE 13/16 Ø
ERECTOR'S NOTE STEEL IS FABRICATED WITH "ERECTION MARKS" ON LEFT HAND END OF MEMBERS				
REV	DATE	BY	DESCRIPTION OF REVISION	
1	09/12/14	MR	REVD PAINT NOTE	
0	09/02/14	MR	ISSUE FOR FAB	
A	08/05/14	MR	ISSUE FOR APPL	
PREP _____				
SHOP PAINT <input type="checkbox"/> NO PAINT _____				
PROJECT		Virginia_Tech_Indoor_Facility		
LOCATION		BLACKSBURG, VA		
ARCHT.		HKS Inc.		
CONTR.		W.M. JORDAN Co.		
REF DWG.: E6,E19		MADE MR 08/05/2014 CHD. MJK 09/12/14		
		ORDER NO. 14-514 SHEET NO. 9B68		
ITEMS	SEQ			9

ONE - BEAM - 9B68

W	21 3/8 x 1/2
F	12 1/4 x 13/16